



# PRELIMINARY DESIGNS

RED EARTH, LLC



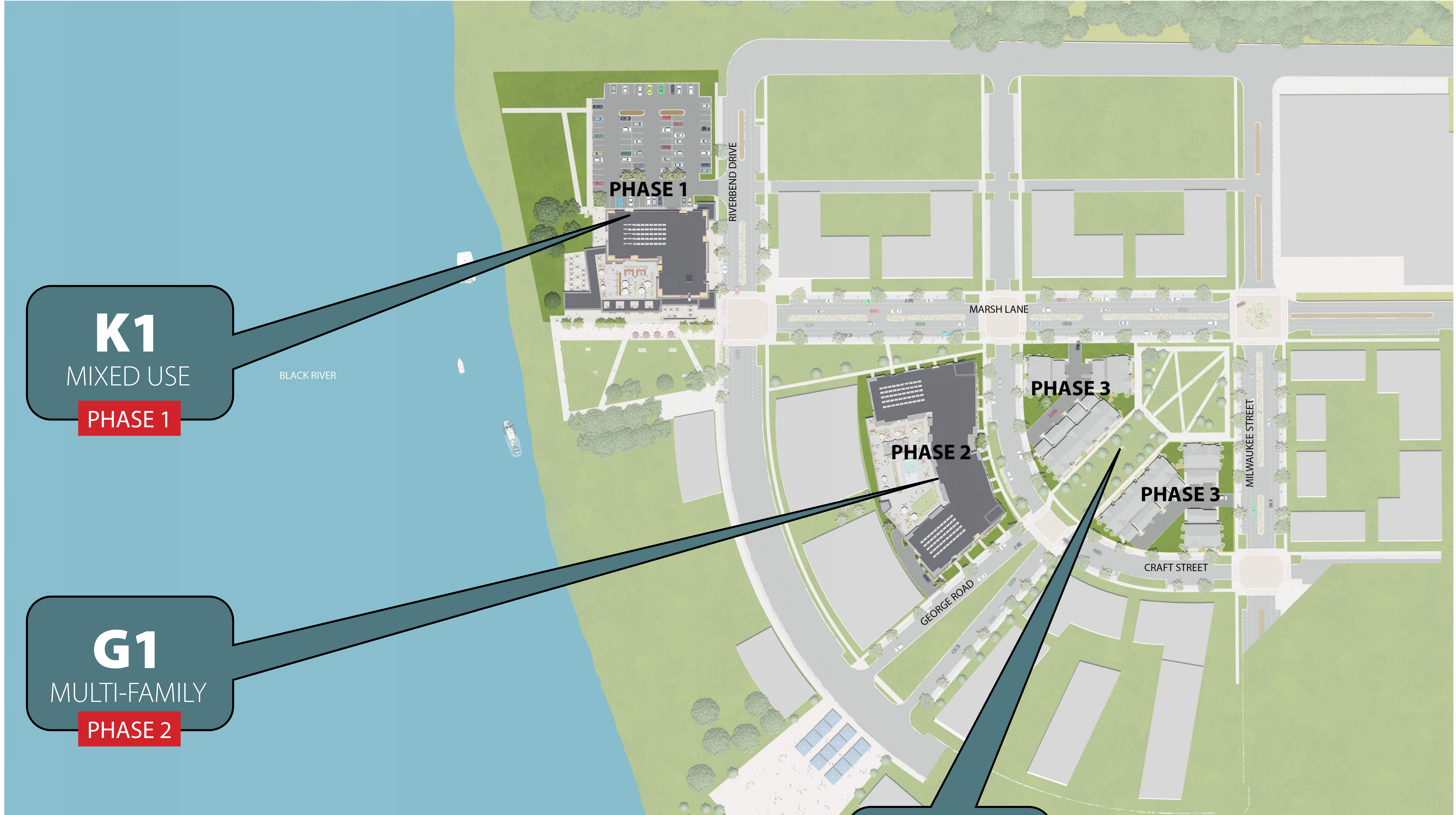






# THREE PHASES

K1 G1 E1 E2



**E1-E2**  
TOWN HOMES  
**PHASE 3**







# K1 - MIXED USE

K1

## PHASE 1 - Mixed-Use



NOTE: EXTERIOR COLOR COMBINATIONS MAY VARY.

### BUILDING DATA

DWELLING UNITS	50
HEIGHT	5 STORIES

### PARKING STALLS

SURFACE	87
COVERED	30
TOTAL	117

### RESIDENTIAL AREA

FIRST FLOOR (INCL. PARKING)	14,015 SF
SECOND - FIFTH FLOORS	56,800 SF
TOTAL	70,815 SF

### COMMERCIAL AREA

	6,550 SF
--	----------

### PROPERTY AMENITIES INCLUDE:

- FITNESS CENTER
- COMMUNITY ROOM
- LOBBY
- COVERED PARKING
- KEY FOB ACCESS PER UNIT



### INDEX

- Dwelling Units
- Common Areas
- Service
- Parking
- Commercial - Restaurant
- Commercial - Internet Cafe



# K1 - MIXED USE

SOUTHEAST ELEVATION

K1



- POTENTIAL INTERNET CAFE UNDER CONSIDERATION
- PRIVATE ROOF DECK FOR TENANT USE
- OPEN & INVITING CONNECTION TO PUBLIC PARK AREA & PUBLIC BOAT DOCKS
- SMOOTH TRANSITION FROM PUBLIC TO PRIVATE SPACE



# K1 - MIXED USE

## NORTHWEST ELEVATION

K1



kba  
knothe • bruce  
ARCHITECTS

- MAXIMIZING DENSITY IN A PRACTICAL WAY
- EASY RESTAURANT ACCESS FROM PARKING LOT
- SEPARATE DESIGNATED PARKING FOR TENANTS AND PUBLIC
- RIVER VIEWS MAXIMIZED



K1 - MIXED USE



7601 University Ave. #201  
Middleton, WI 53562  
Phone: 608.836.3690

ISSUED

PROJECT TITLE  
RIVERPOINT  
DISTRICT

Riverside North  
La Crosse, WI

SHEET TITLE  
EXTERIOR  
ELEVATIONS  
COLORED

SHEET NUMBER

A-2.3

PROJECT NUMBER 2151

© Knothe & Bruce Architects, LLC

NOT FOR CONSTRUCTION

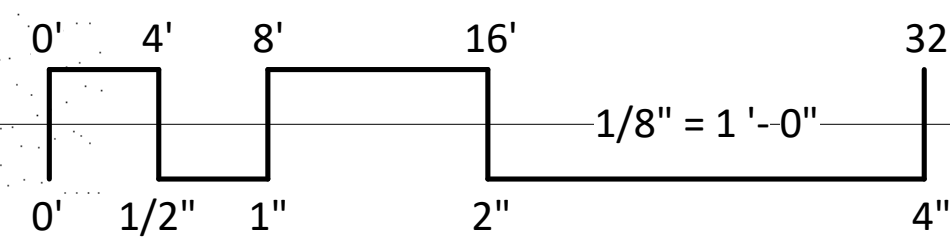


1 COLORED ELEVATION - NORTH  
A-2.3 1/8" = 1'-0"



2 COLORED ELEVATION - SOUTH  
A-2.3 1/8" = 1'-0"

EXTERIOR MATERIAL SCHEDULE		
BUILDING ELEMENT	MANUFACTURER	COLOR
(#1) - COMPOSITE LAP SIDING 6"	JAMES HARDIE	COUNTRYLANE RED
(#2) - METAL PANEL	CMG	BRIGHT WHITE
COMPOSITE TRIM	JAMES HARDIE	MATCH ADJ. SIDING COLOR
(#3) - MASONRY BASE VENEER	ARRISCRAFT	CHAMPAGNE - GEORGIA RENAISSANCE
(#4) - CAST STONE BANDS & SILLS	ROCKCAST	CHARLOTTE TAN
(#5) - COMPOSITE WINDOWS	ANDERSEN 100	WHITE
(#6) - ALUM. STOREFRONT	N/A	WHITE
(#7) - 12 X 12 WOOD COLUMN	N/A	MATCH #8 RIVER ROCK
(#8) - TIMBER ELEMENTS	WOODTONE RUSTIC SERIES	RIVER ROCK
CANOPY & BAY SOFFITS	JAMES HARDIE	COLOR TO MATCH ADJ. TRIM/SIDING
(#9) - RAILINGS & HANDRAILS	SUPERIOR	BLACK
TREATED-EXPOSED DECK BEAMS	N/A	BROWN TREATED

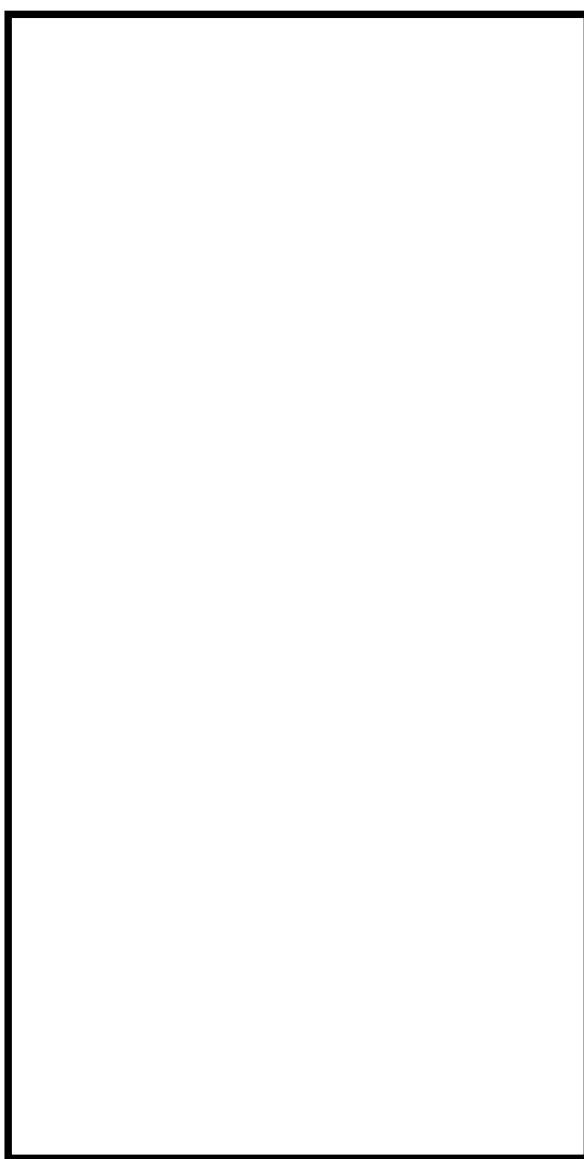




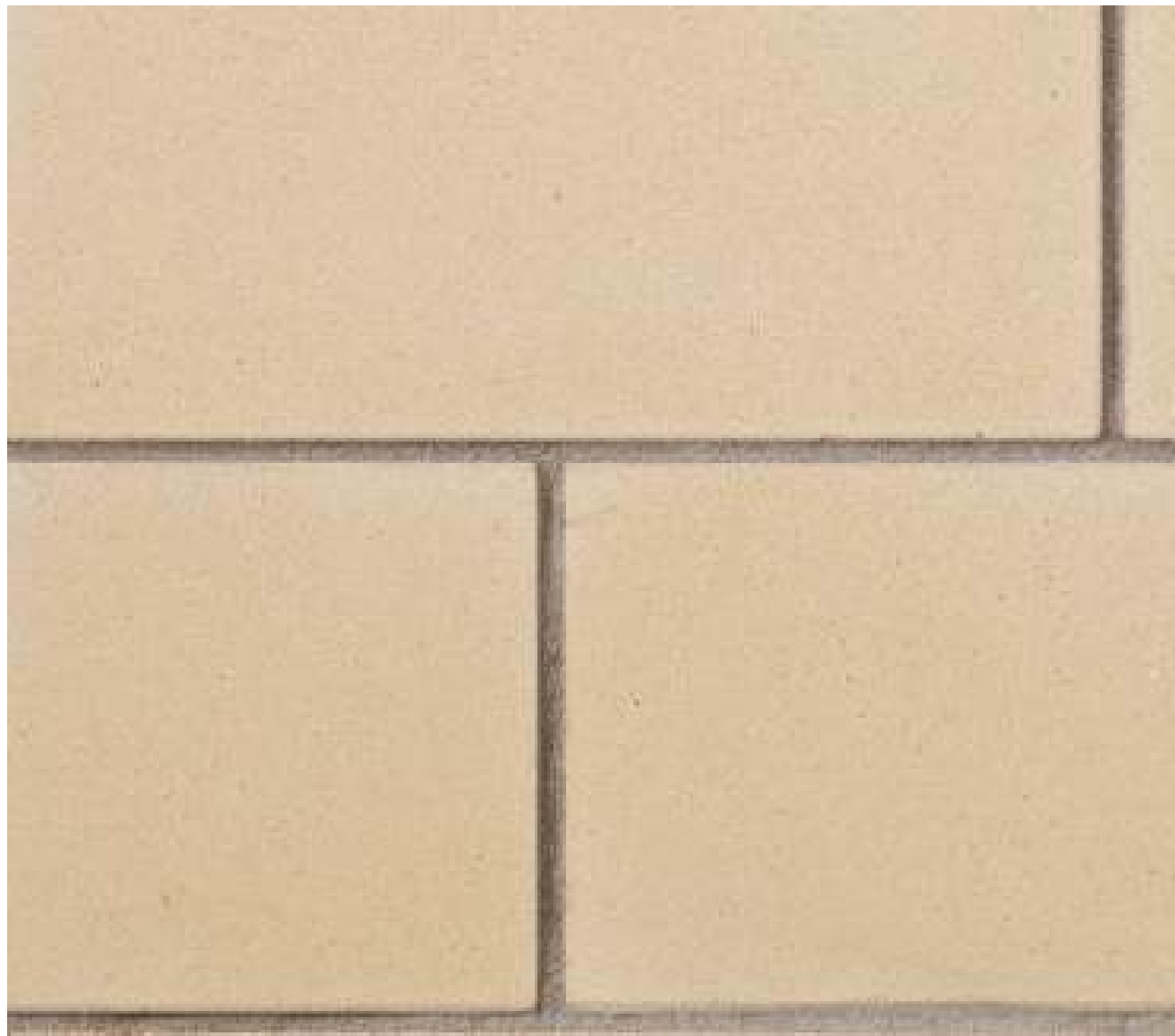
# K1 - MIXED USE



Composite Lap Siding 6"  
James Hardie  
CountryLane Red



Metal Panel  
CMG  
Bright White



Masonry Stone Veneer  
Arriscraft  
Champagne - Georgia Renaissance



Cast Stone Elements  
RockCast  
Charlotte Tan



Window Trim - White



Timber Elements  
WoodTone Rustic Series  
River Rock



NOTE: EXTERIOR COLOR COMBINATIONS MAY VARY.

NOTE: ROOFTOP SOLAR POWER SYSTEM IS BEING RESEARCHED AND CONSIDERED.

EXTERIOR MATERIAL SCHEDULE		
BUILDING ELEMENT	MANUFACTURER	COLOR
(#1) - COMPOSITE LAP SIDING 6"	JAMES HARDIE	COUNTRYLANE RED
(#2) - METAL PANEL	CMG	BRIGHT WHITE
COMPOSITE TRIM	JAMES HARDIE	MATCH ADJ. SIDING COLOR
(#3) - MASONRY BASE VENEER	ARRISCRAFT	CHAMPAGNE - GEORGIA RENAISSANCE
(#4) - CAST STONE BANDS & SILLS	ROCKCAST	CHARLOTTE TAN
(#5) - COMPOSITE WINDOWS	ANDERSEN 100	WHITE
(#6) - ALUM. STOREFRONT	N/A	WHITE
(#7) - 12 X 12 WOOD COLUMN	N/A	MATCH #8 RIVER ROCK
(#8) - TIMBER ELEMENTS	WOODTONE RUSTIC SERIES	RIVER ROCK
CANOPY & BAY SOFFITS	JAMES HARDIE	COLOR TO MATCH ADJ. TRIM/SIDING
(#9) - RAILINGS & HANDRAILS	SUPERIOR	BLACK
TREATED-EXPOSED DECK BEAMS	N/A	BROWN TREATED





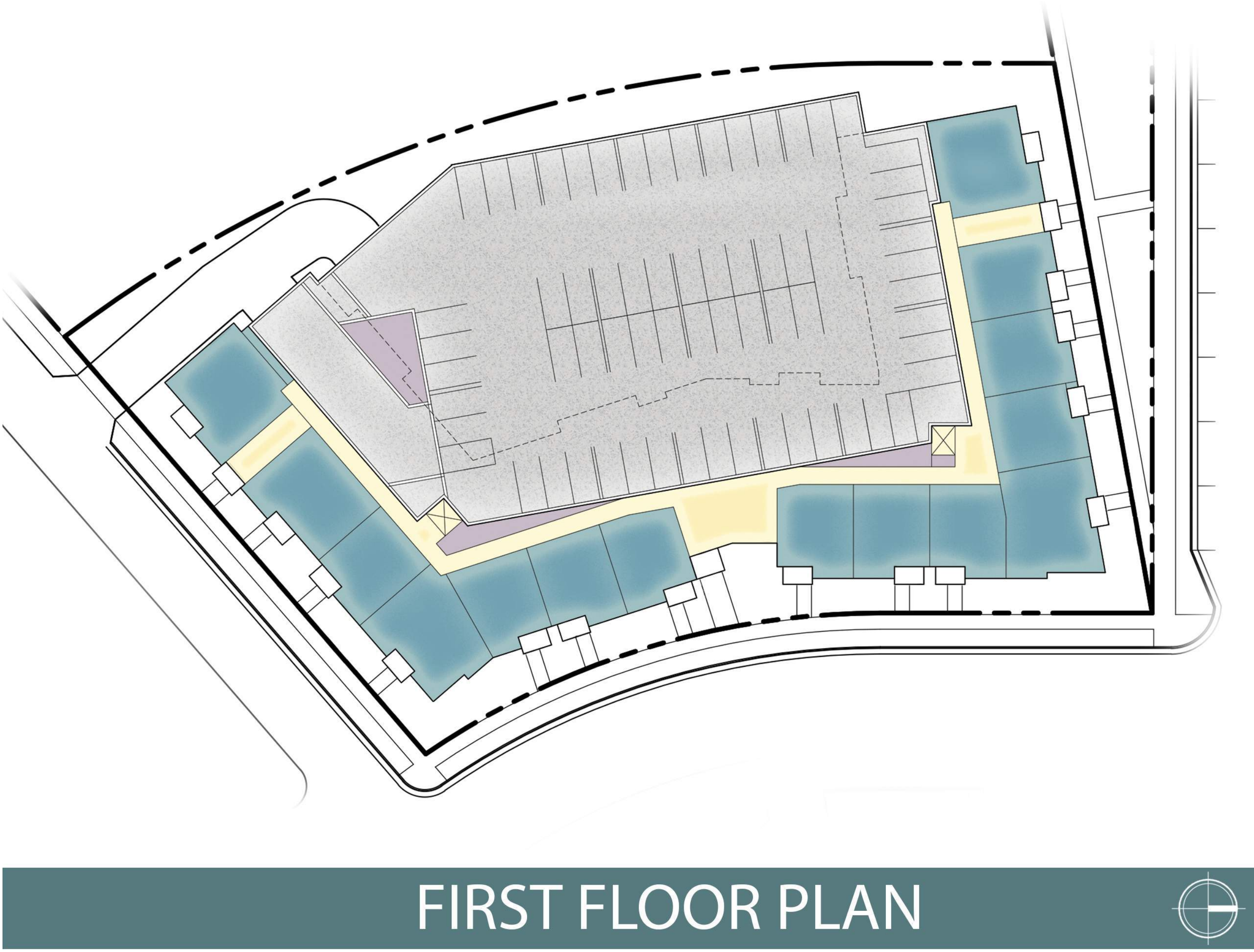
NOTE: EXTERIOR COLOR COMBINATIONS MAY VARY.



# G1 - MULTI-FAMILY

G1

## PHASE 2 - Residential



### BUILDING DATA

DWELLING UNITS	106
HEIGHT	5 STORIES
COVERED PARKING STALLS	128
<b>RESIDENTIAL AREA</b>	
FIRST & SECOND FLOORS	85,000 SF (INCL. PARKING)
THIRD - FIFTH FLOORS	82,800 SF
TOTAL	167,800 SF

### PROPERTY AMENITIES INCLUDE:

- FITNESS CENTER
- COMMUNITY ROOM
- LOBBY
- COVERED PARKING GARAGE
- KEY FOB ACCESS PER UNIT
- DOG WASH STATION
- DOG RUN AREA
- OUTDOOR POOL WITH PATIO / LOUNGE

### INDEX

- Dwelling Units
- Common Areas
- Service
- Parking



# G1 - MULTI-FAMILY

WEST ELEVATION

G1



NOTE: EXTERIOR COLOR COMBINATIONS MAY VARY.

- 3RD FLOOR PRIVATE OUTDOOR POOL, PATIO, DOG RUN AREA
- 2-STORY PARKING GARAGE WITH SECURE ENTRANCE
- BALCONY INCLUDED AT EACH UNIT

NOTE: ROOFTOP SOLAR POWER SYSTEM IS BEING RESEARCHED AND CONSIDERED.  
ROOF DECK POOL CONCEPT PENDING FEASIBILITY.



# G1 - MULTI-FAMILY

SOUTH ELEVATION



NOTE: EXTERIOR COLOR COMBINATIONS MAY VARY.

- FIRST LEVEL WALK-IN UNIT ENTRANCES
- ATTACHED PARKING GARAGE WITH 128 STALLS
- 5 TOTAL STORIES ENCOMPASSING OVER 167,000 SF
- HIDDEN PARKING GARAGE ENTRANCE ENHANCES CURB APPEAL



G1 - MULTI-FAMILY



NOT FOR CONSTRUCTION

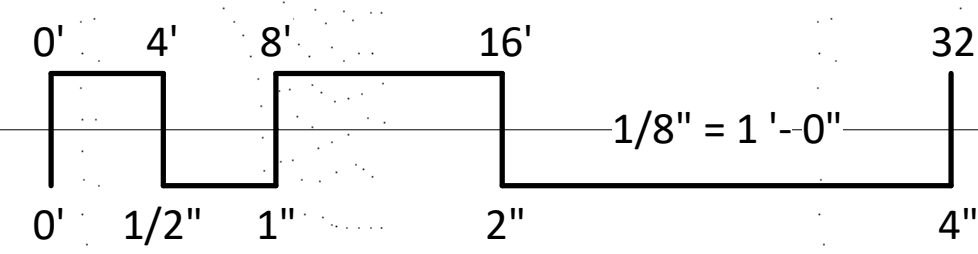


1 COLORED ELEVATION - WEST 1  
A-2.6 1/8" = 1'-0"



2 COLORED ELEVATION - WEST 2  
A-2.6 1/8" = 1'-0"

EXTERIOR MATERIAL SCHEDULE		
BUILDING ELEMENT	MANUFACTURER	COLOR
(#1) - COMPOSITE LAP SIDING 6"	JAMES HARDIE	PEARL GRAY
(#2) - COMPOSITE LONG BOARD	WOODTONE	RUSTIC SERIES - WINCHESTER BROWN
(#3) - METAL PANEL	CMG	GALVALUME PLUS
(#4) - COMPOSITE TRIM	JAMES HARDIE	NIGHT GRAY
(#5) - MASONRY BASE VENEER	ARRISCRAFT	LIMESTONE - GEORGIA RENAISSANCE
(#6) - CAST STONE BANDS & SILLS	ROCKCAST	REISLING
(#7) - 12 X 12 WOOD COLUMN	N/A	MATCH #2 WINCHESTER BROWN
(#8) - COMPOSITE WINDOWS	ANDERSEN 100	BLACK
(#9) - ALUM. STOREFRONT	N/A	BLACK
(#10) - INSULATED METAL DOORS/FRAMES	N/A	TBD
CANOPY & BAY SOFFITS	JAMES HARDIE	COLOR TO MATCH ADJ. TRIM/SIDING
(#11) - RAILINGS & HANDRAILS	SUPERIOR	BLACK
TREATED-EXPOSED DECK BEAMS	N/A	BROWN TREATED
(#12) - WIRE MESH COVERING	N/A	BLACK



PROJECT TITLE  
RIVERPOINT DISTRICT

Riverside North  
La Crosse, WI  
SHEET TITLE  
EXTERIOR ELEVATION COLORED

SHEET NUMBER

A-2.6  
PROJECT NUMBER 2151

© Knothe & Bruce Architects, LLC



# G1 - MULTI-FAMILY





Composite Lap Siding 6"  
James Hardie  
Pearl Gray



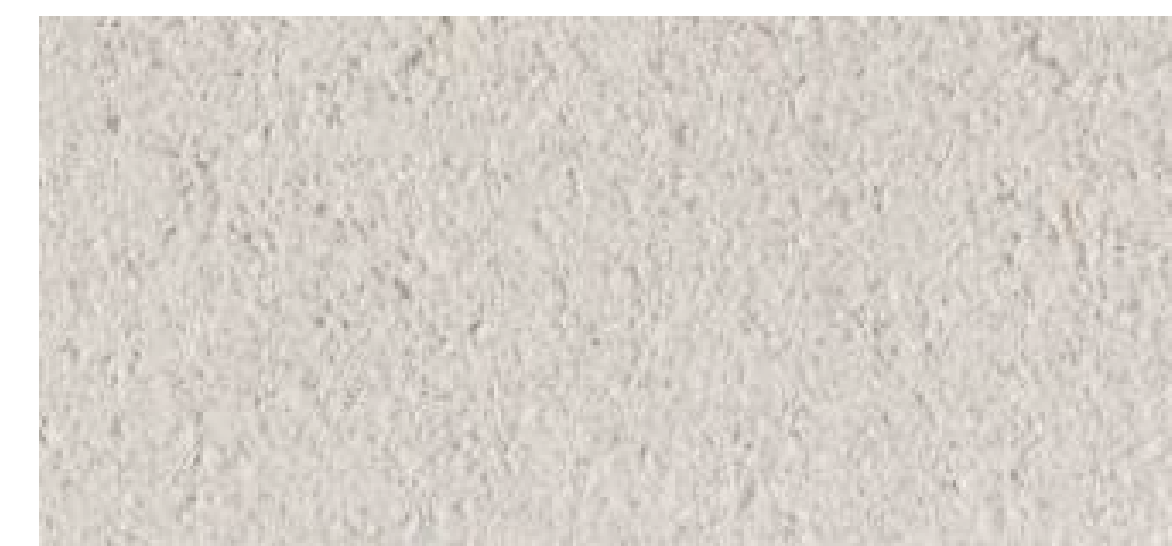
Composite Longboard  
WoodTone Rustic Series  
Winchester Brown



Metal Panel  
CMG  
Galvalume Plus



Masonry Stone Veneer  
Arriscraft  
Limestone - Georgia Renaissance



Cast Stone Elements  
RockCast  
Reisling



Trim - James Hardie  
Night Gray



Window Trim - Black



Timber Elements  
WoodTone Rustic Series  
Winchester Brown

EXTERIOR MATERIAL SCHEDULE		
BUILDING ELEMENT	MANUFACTURER	COLOR
(#1) - COMPOSITE LAP SIDING 6"	JAMES HARDIE	PEARL GRAY
(#2) - COMPOSITE LONG BOARD	WOODTONE	RUSTIC SERIES - WINCHESTER BROWN
(#3) - METAL PANEL	CMG	GALVALUME PLUS
(#4) - COMPOSITE TRIM	JAMES HARDIE	NIGHT GRAY
(#5) - MASONRY BASE VENEER	ARRISCRAFT	LIMESTONE - GEORGIA RENAISSANCE
(#6) - CAST STONE BANDS & SILLS	ROCKCAST	REISLING
(#7) - 12 X 12 WOOD COLUMN	N/A	MACTCH #2 WINCHESTER BROWN
(#8) - COMPOSITE WINDOWS	ANDERSEN 100	BLACK
(#9) - ALUM. STOREFRONT	N/A	BLACK
(#10) - INSULATED METAL DOORS/FRAMES	N/A	TBD
CANOPY & BAY SOFFITS	JAMES HARDIE	COLOR TO MATCH ADJ. TRIM/SIDING
(#11) - RAILINGS & HANDRAILS	SUPERIOR	BLACK
TREATED-EXPOSED DECK BEAMS	N/A	BROWN TREATED
(#12) - WIRE MESH COVERING	N/A	BLACK



Riverside North - BLDG 2  
La Crosse, WI  
5/16/2022  
KBA #2151







NOTE: EXTERIOR COLOR COMBINATIONS MAY VARY.

**E1** **E2**

**PHASE 3**



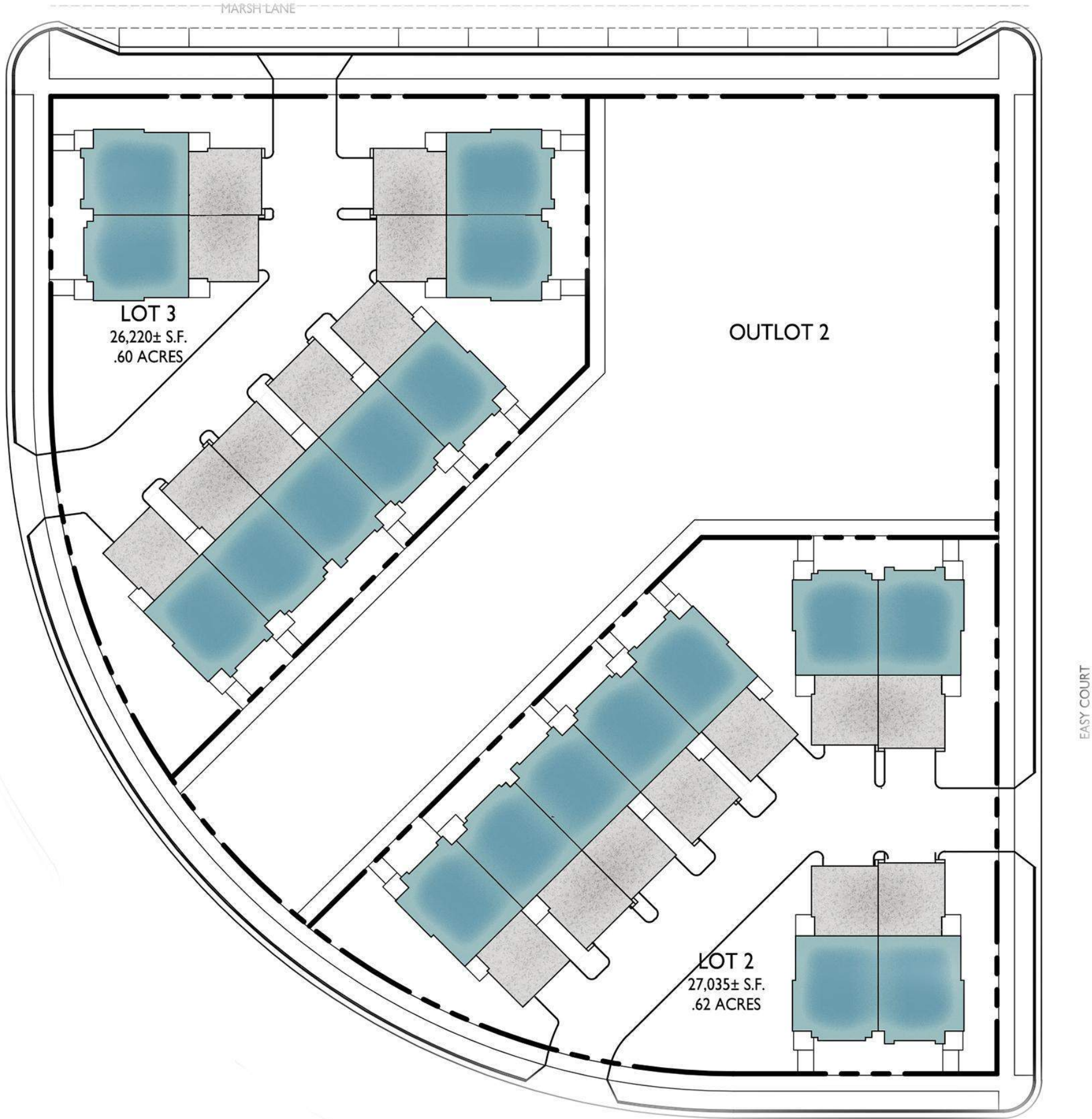
# E1 & E2 - TOWNHOMES

E1 E2

## PHASE 3 - Residential



BUILDING DATA	
TOWNHOUSE DWELLING UNITS	18
HEIGHT	2 STORIES
GARAGE PARKING STALLS	36
RESIDENTIAL AREA	39,600 SF (INCL. GARAGE)



INDEX	
Dwelling Units	Common Areas
Service	Parking



# E1 & E2 - TOWNHOMES

EAST ELEVATION



- 18 TOTAL (3) BEDROOM / (2) BATH OWNER-OCCUPIED UNITS
- EACH UNIT IS 2 STORIES HIGH
- 2-CAR ATTACHED GARAGE WITH ADDITIONAL PARKING SPACE AT EACH UNIT



# E1 & E2 - TOWNHOMES

WEST ELEVATION



- COMMON GREEN SPACE BETWEEN E1 & E2 UNITS
- SEMI-PRIVATE PATIO SPACE OUTSIDE EACH UNIT
- ROLL UP PRIVACY SHADES
- MAIN LEVEL MASTER BEDROOM AND BATH



# E1 & E2 - TOWNHOMES



Composite Lap Siding 8"  
James Hardie  
Arctic White



Composite Panel  
James Hardie - Smooth  
Iron Gray



Composite Panel  
James Hardie - Smooth  
Arctic White



Masonry Stone Veneer  
Elderado Stone  
Ridgetop18 Whisper White



Cast Stone Elements  
RockCast  
Crystal White



Trim - Black



Window Trim - Black



Metal Roof  
McElroy - Medallion Lok  
Charcoal



NOTE: EXTERIOR COLOR COMBINATIONS MAY VARY.

\*SEE EXHIBIT A - TOWNHOME OPTION 2, FOR ALTERNATIVE DESIGN

EXTERIOR MATERIAL SCHEDULE		
BUILDING ELEMENT	MANUFACTURER	COLOR
(#1) - COMPOSITE LAP SIDING 8"	JAMES HARDIE	ARCTIC WHITE
(#2) - MASONRY BASE VENEER	ELDERADO STONE	RIDGETOP18 WHISPER WHITE
(#3) - COMPOSITE PANEL	JAMES HARDIE	IRON GRAY - SMOOTH
(#4) - COMPOSITE PANEL	JAMES HARDIE	ARCTIC WHITE - SMOOTH
(#5) - COMPOSITE TRIM	JAMES HARDIE	MATCH #8 ROOF COLOR
(#6) - COMPOSITE TRIM	JAMES HARDIE	BLACK
(#7) - CAST STONE BANDS & HEADERS	ROCKCAST	CRYSTAL WHITE
(#8) - METAL ROOF	MCELROY	CHARCOAL - MEDALLION LOK
(#9) - COMPOSITE WINDOWS	ANDERSEN 100	BLACK
CANOPY & BAY SOFFITS	JAMES HARDIE	COLOR TO MATCH ADJ. TRIM/SIDING
TREATED-EXPOSED DECK BEAMS	N/A	BROWN TREATED

Riverside North - TownHouse  
La Crosse, WI  
5/16/2022  
KBA #2151





